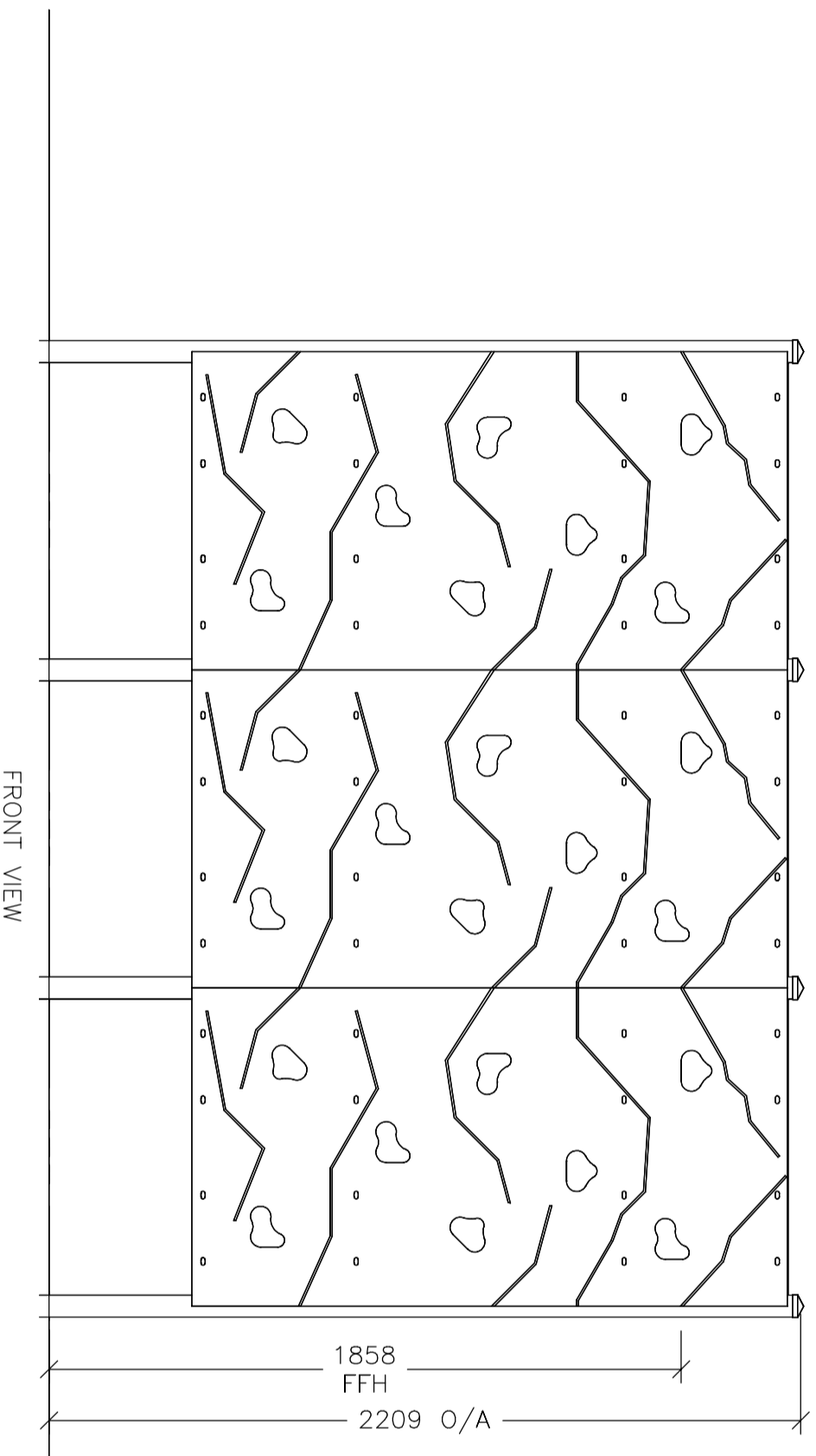
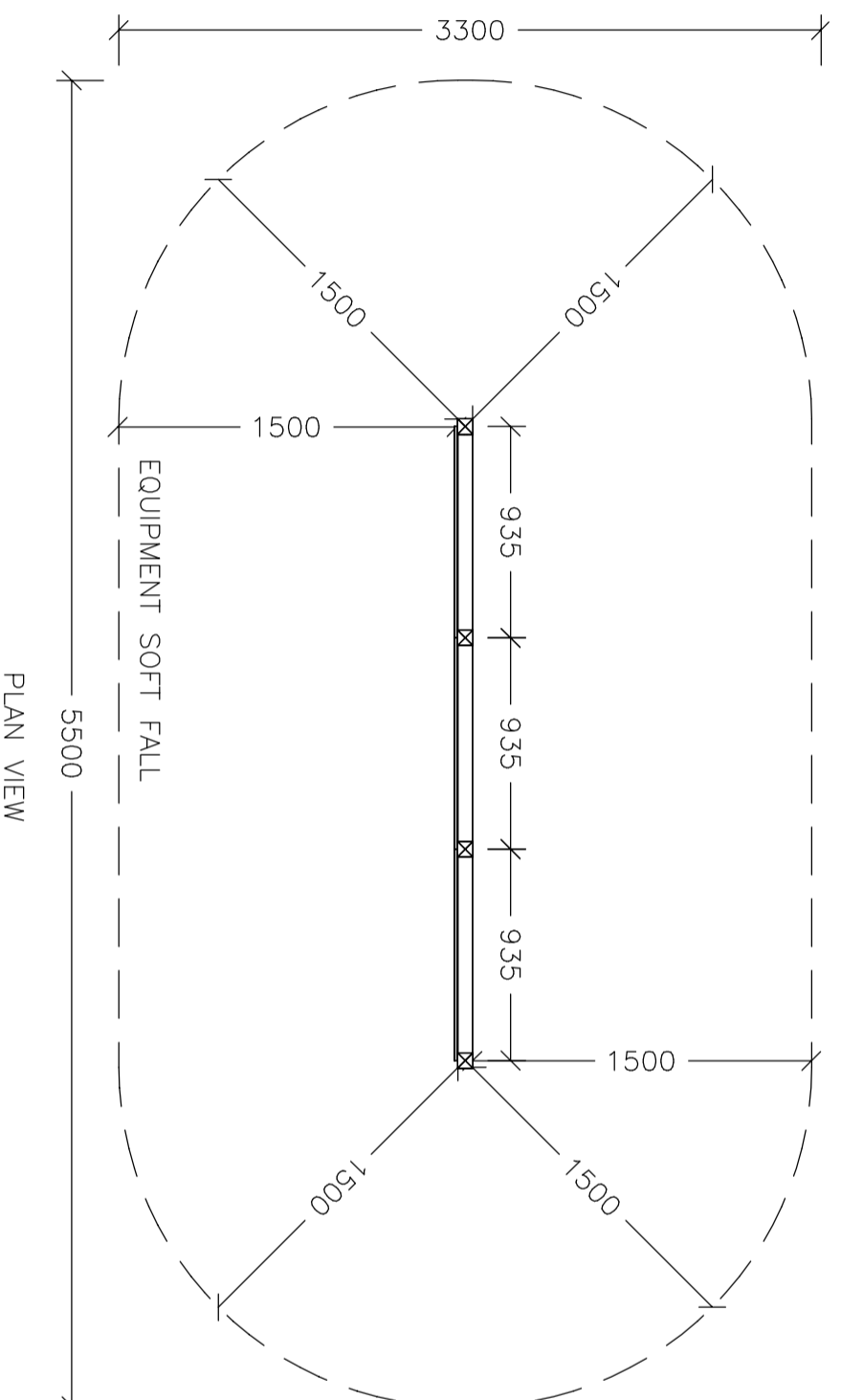


MADE IN AUSTRALIA

AUSTRALIAN OWNED



PLAN VIEW
COMPONENT DETAILS

TRIPLE ROCKWALL CLIMBING WALL
PLAYGROUND EQUIPMENT

ALL UPRIGHTS:
COLOUR:

A-53: CENTRE BRACKET
QTY: 12
COLOUR:


(FOR COSTING ONLY)
C-149-1: 1.8M TRI-LAM
ROCKWALL PANEL
QTY: 03

STANDARDS COMPLIANCE
GENERAL SAFETY REQUIREMENTS
AS 4685.1-2014

PARTICULAR REQUIREMENTS
AS 4685.2-2014: SWING SAFETY
AS 4685.3-2014: SLIDE SAFETY
AS 4685.4-2014: CABLEWAY SAFETY
AS 4685.5-2014: CAROUSEL SAFETY
AS 4685.6-2014: ROCKER SAFETY

NOTES:

SOFTFALL MEASUREMENTS:	3.1x6.0M
OVERALL EQUIPMENT SIZE:	0.1x3.0M
SOFTFALL PERIMETER:	18.5M
SOFTFALL SQM AREA:	19.0M ²


recreation equipment
ABN: 59 948 279 569
PHONE: (08) 9309 0200
FAX: (08) 9309 0222
MADE IN AUSTRALIA
AUSTRALIAN OWNED

DWG No:	FRE-135-2
DRN BY:	JOSH CHEUNG
DATE:	09.03.2021
SCALE:	N.T.S.